



Installation, Operation and Maintenance Guide

RIA SafeGuard



OUR MISSION

To improve health and wellness by actively restoring indoor air to its pure, natural state where no pollution or contaminants exist, while reducing energy use and emissions in the process.

IMPORTANT

Save this Document for Future Reference & Warranty Information



AtmosAir.com
CAG-09-21-002

Trademarks

Any brand names and product names included in this document are trademarks, registered trademarks, or trade names of their respective holders.

To the Holder of this Document

The contents of this document are current as of the date of publication. AtmosAir® reserves the right to change the contents without prior notice.

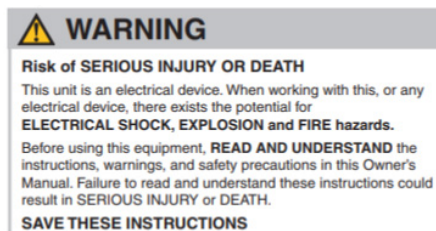
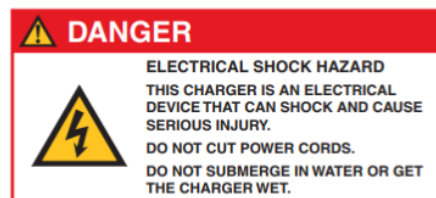
In no event will AtmosAir be liable for any special, incidental, or consequential damages or for commercial losses even if AtmosAir has been advised thereof as a result of issue of this document.

WARNING

Failure to follow this warning could result in personal injury or death.

For installation you **MUST:**

- Always disconnect all electrical power to the unit before handling any of the components, before removing access panels, or to perform any maintenance activities.
 - Do NOT connect to the power before the installation is complete and personnel are aware of the imminent operation.
 - Installation of AtmosAir equipment is not to be performed in areas with extreme conditions such as extreme heat or cold, or where water or condensing moisture can impact the system.
 - Carefully read this instruction booklet before beginning the installation.
 - Follow each installation or repair step exactly as shown and explained in this guide.
 - Observe all local, state, national, and international electrical codes.
 - Pay close attention to all warnings and caution notices given in this guide.
1. Before installing or servicing system, always turn off main power to system.
Note: There may be more than one disconnect switch.
 2. AtmosAir equipment must be installed with a proper ground. The electrical cable enclosed with your AtmosAir unit must be used as it has a special plug which provides a ground circuit for the equipment.
 3. Always replace fuse with the same rating and type of fuse.
 4. Failure to follow this caution may result in personal injury or product and/or property damage.
 5. Although special care has been taken to minimize sharp edges in the construction of your unit, be extremely careful when handling parts or reaching into the unit.
 6. Keep path clear near and in front of intake screen.
 7. Do NOT block or obstruct the air flow of the unit.
 8. Do NOT operate outside of this range: -1°C to 49°C (30°F to 120°F).
 9. Cleaning should be performed only when the power is disconnected.
 10. Contact your AtmosAir dealer or qualified installer for further guidance.



Disclaimer: The air purification technologies provided by Clean Air Group are intended to improve indoor air quality. They are not intended as a replacement for reasonable precautions aimed at preventing the transmission of contaminants, airborne or otherwise. All persons having access to the serviced premises should comply with applicable public health laws and guidelines issued by federal, state and local governments and health authorities such as the Centers for Disease Control and Prevention (CDC). Clean Air Group does not maintain that its products will protect people from all modes of transmission of bacteria, viruses or other contaminants, and excludes liability for loss or damage arising from any such claims or the consequences arising out of the application, use or misuse of its products.

Table of Contents

01 PRODUCT FEATURES	4
02 SPECIFICATIONS	5
03 NOTICE	6
04 MAINTENANCE GUIDE	8
05 TROUBLESHOOTING GUIDE	9
06 WARRANTY	10

01 PRODUCT FEATURES

1) A Bold Yet Elegant Metallic Design

RIA SafeGuard is intricately designed to offer a perfect blend of art and modern technology. The outsized aluminum panels are delicately treated with a luxurious finish for a smooth and warm touch. The metal craftsmanship features unparalleled quality that can withstand the test of time in both style and durability.

2) A Proactive and Continuous BPI Purification Technology RIA SafeGuard uses AtmosAir™ patented Bi-Polar Ionization (BPI) purification technology to proactively generate positive and negative ions into the air. The technology has proven effective at improving air quality and removing air pollutants without producing any harmful ozone or byproducts.

3) Dual Purification Approaches

In addition to releasing beneficial oxygen ions to proactively neutralize pollutants in the air or on the surface, RIA SafeGuard is equipped with a high-efficiency HEPA filter to remove more than 99.9% of microparticles in the air.

4) A Small Footprint Yet Highly Efficient

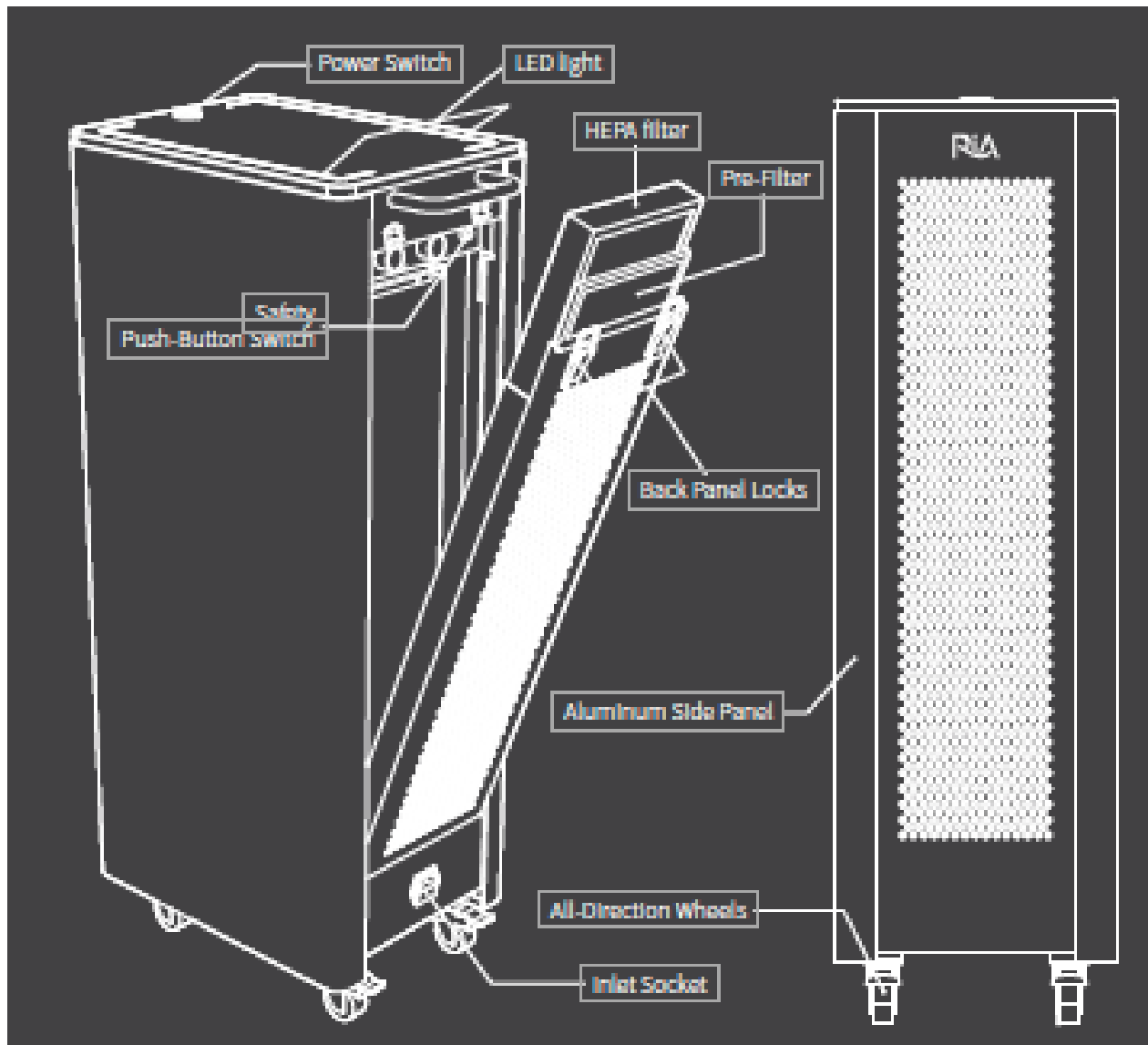
A single RIA SafeGuard can be effective for an indoor area up to 1076 ft² (100 m²) – a highly efficient purification unit.

5) Ideal For Large Public Spaces

RIA SafeGuard is ideal for crowded indoor spaces like hospitals, schools, malls, nursing homes, commercial offices, and hotels.

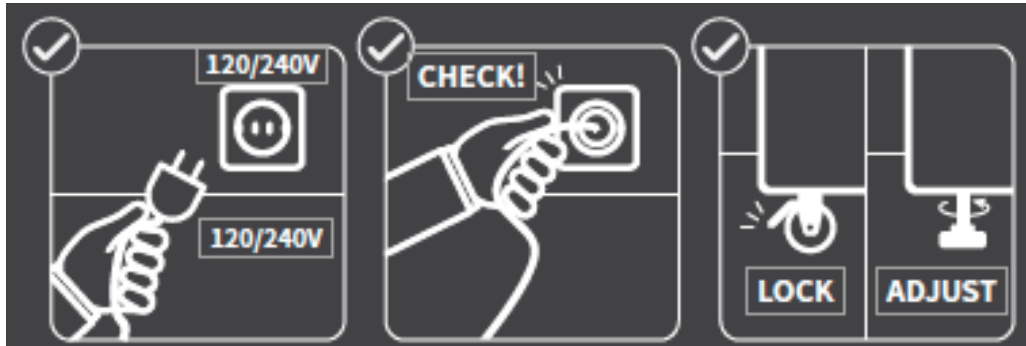
02 SPECIFICATIONS

Product	RIA SafeGuard
Power Consumption	60W
Voltage	120V, 50-60 Hz or 240V, 50-60 Hz
Maximum Noise Level	≤61dB (Standard Mode) / ≤75dB (Turbo Mode)
Coverage Area	≤100m ² / 1076ft ²
Weight	30kg / 66lb
Dimensions (W*D*H)	42 x 28 x 90cm / 1.3 x 0.9 x 2.9ft



03 NOTICE

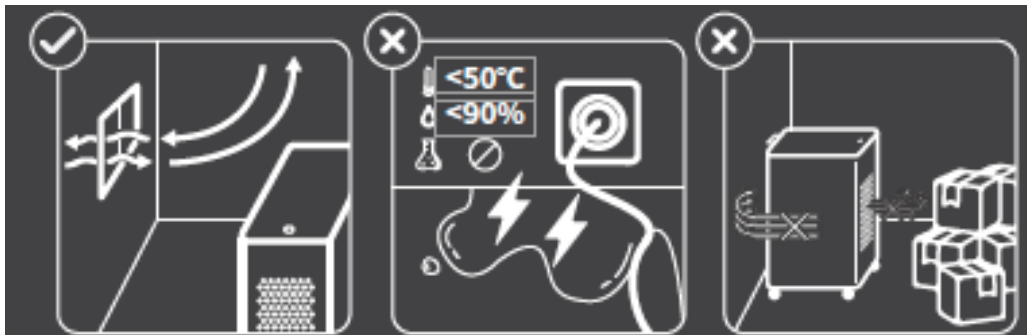
Read this manual carefully before operating the appliance. Please operate it within the stated constraints in this manual.



DO check the SafeGuard label to make sure it is compatible with the local power voltage.

DO make sure the power cable is properly connected and is kept away from young children's reach.

DO lock the wheels or adjust the leveling feet to level the unit with the ground after placing SafeGuard in a safe location.



DO place the unit in a location with good air circulation and avoid using it in a confined area.

DO NOT place the unit under high temperature, high humidity, or corrosive environment.

DO NOT block the inlet and outlet of the airflow to avoid interrupting the release of ions.



DO NOT unplug the power cable while the power is on.

DO NOT attempt to modify, disassemble, or touch the internal components of the appliance.

The service personnel shall set up the SafeGuard for you. RIA recommends not to adjust the setting unless deemed appropriate.

• **Product Setup:**

1. Make sure the inlet and outlet of the airflow are not obstructed.
2. Connect the power cable to both the power outlet and inlet socket.
3. Press the power switch button to turn on the appliance. The power switch light indicates the power is on.
4. Adjust the fan speed by turning the knob. Turn the knob clockwise to increase the speed and counter-clockwise to reduce the speed.

(The turbo mode is a feature to quickly increase the airflow passing through the appliance and is generally excessive under most circumstances. Turbo mode generates a higher noise level – RIA recommends only using the turbo mode in short periods when necessary.)

5. Adjust the ion level based on the operating environment. Turn off the ion release by turning the knob to “0”. Turn the knob clockwise to increase the ion release and counter-clockwise to reduce the ion release.



05 MAINTENANCE GUIDE

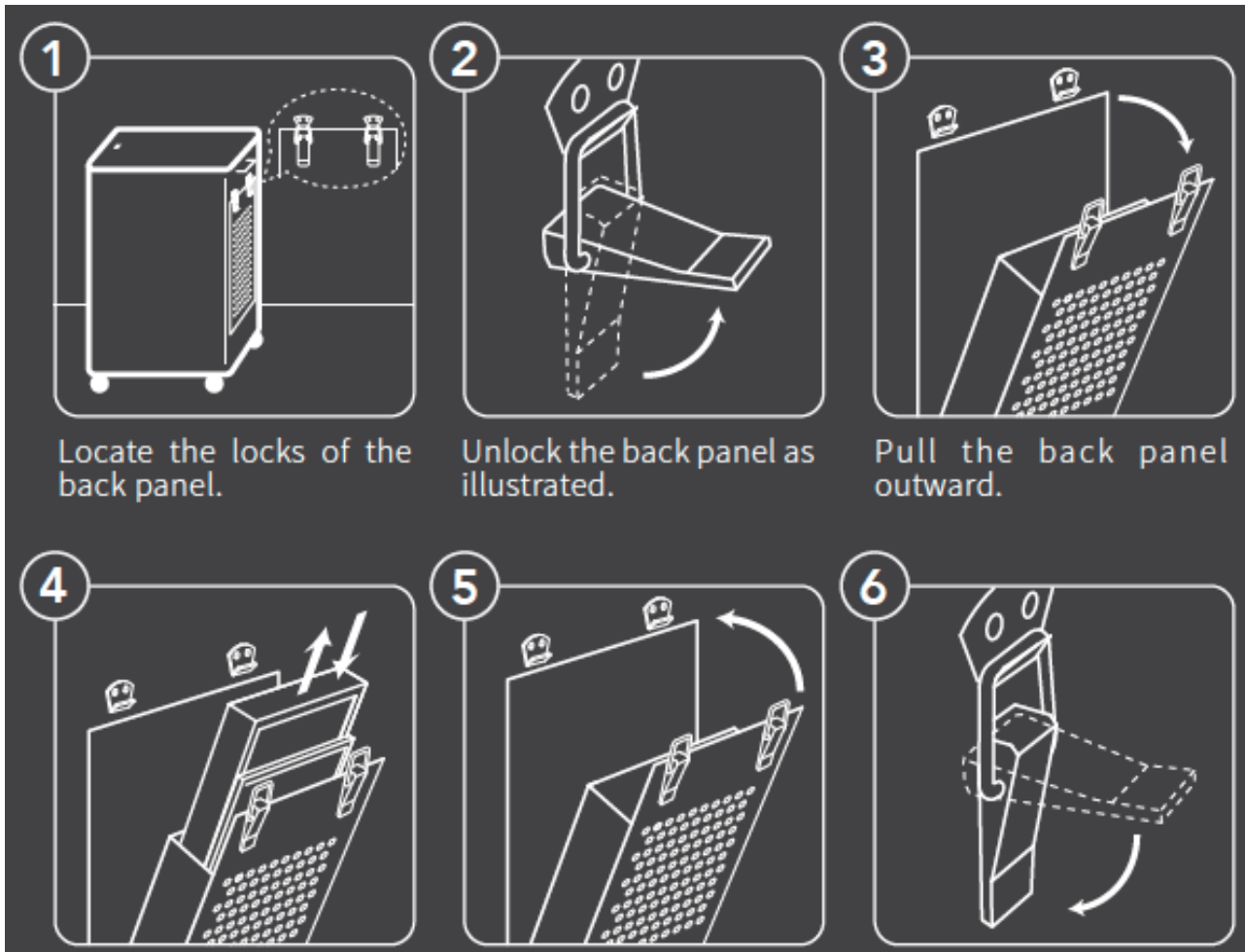
Consumables:

HEPA filter: Recommend to replace every 6 months.

BPI tube: Recommend to replace every 24 months.

(Note: The lifespan of a consumable may vary depending on the operating environment.)

• How to replace HEPA filter or clean the pre-filter:



1
Locate the locks of the back panel.

2
Unlock the back panel as illustrated.

3
Pull the back panel outward.

4
Pull the old HEPA filter or the dirty pre-filter out. Insert a new HEPA filter or the washed pre-filter into the appliance.

5
Push the back panel inward to close the back panel.

6
Lock the back panel as illustrated.

06 TROUBLESHOOTING GUIDE

WARNING: RISK OF ELECTRIC SHOCKS

This troubleshooting guide is for service personnel's reference only.
Unless authorized, please **DO NOT** attempt to repair or service the appliance.

Issues	Components	Likely root causes	Likely resolution
No power	Power cable	The power cable is loose.	Make sure the power cable is properly connected to both the power outlet and inlet socket.
	Inlet socket fuse	Burned fuse.	Replace the fuse if burned.
	Power switch	The power switch is off or broken.	Press or replace the power switch.
The LED light on the top panel does not light up	LED light	The LED light connector is loose or the light is burned.	Make sure the connector is not loose. Replace the LED light if burned.
	Back panel	The back panel is not properly closed.	Make sure the back panel is fully closed and locked.
No output airflow	Safety push-button switch	Broken safety push-button switch.	Replace the safety push-button switch.
	Fans	Broken fans.	Replace the fans.
	Fan Controller	Broken fan controller.	Replace the fan controller.
	BPI tube	Old or malfunctioned BPI tube.	Replace BPI tube.
Abnormal ion levels (verified by authorized personnel)	BPI transformer fuse	Burned transformer fuse.	Replace the fuse if burned.
	The metal strip conductor on the transformer	The conductor does not properly touch the metal mesh of the BPI tube.	Properly place the conductor against the mesh of the BPI tube and securely tighten it with the provided screw.

07 WARRANTY

Please read this manual carefully before using SafeGuard.

1. RIA provides an extended 1-year manufacturer’s warranty. Please contact your local dealer for paid services after the warranty period.
2. Please store this warranty card and the proof of purchase in a secured location for future reference. RIA reserves the right to request these documents before accepting any warranty-related services.
3. Accessories and consumables are excluded from this warranty coverage and can be replaced with a fee.
4. The warranty does not cover component repairs due to their natural wear and tear.
5. Please contact your local dealer for any inquiries or service requests.
6. The warranty is waived under the following circumstances:
 - a. Improper use or storage of the product.
 - b. Without the relevant receipt or a valid proof of purchase.
 - c. Receipt or proof of purchase has been modified.
 - d. Product malfunctioning due to inappropriate voltage or violation of usage criteria stated in this manual.
 - e. Damages caused by the acts of God, floods, fires, lighting or other natural disasters, wars, unexpected events, or other external factors.

Model	RA-SG020AUS RA-SG020AUD RA-SG020CNS RA-SG020CND RA-SG020EUS RA-SG020EUD RA-SG020UKS RA-SG020UKD RA-SG020USS RA-SG020USD RA-SG020ZAS RA-SG020ZAD	Distributor
Serial Number		
Purchase Date		
Warranty Date		

* RIA reserves the right to make appropriate changes to product specifications. Kindly notice that no further notification will be given for such changes.