



User Guide

Atmos BACnet Configuration Tool

OUR MISSION

To improve health and wellness by actively restoring indoor air to its pure, natural state where no pollution or contaminants exist, while reducing energy use and emissions in the process.



AtmosAir.com
CAG-04-23-001

USER MANUAL

For the connection of the AtmosSmart-3 device with a client's BACnet network.

GBX TECHNOLOGY

Index:

- ___ Before Installation
- ___ BACnet Configuration Software Installation
- ___ How to use BACnet Configuration Tool

Prior to Installation:

Before beginning the installation, the install technician should read the AtmosSmart-3 Configuration to ensure that they have all the necessary and required elements in the installation process.

The installer technician must use their laptop where the BACnet Configuration Software is already installed. You will also need to have an Ethernet cable with you.

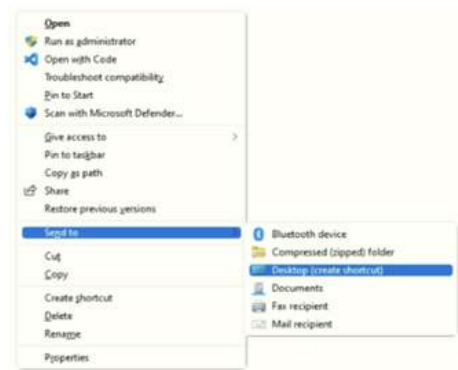
BACnet Configuration Software Installation:

- Unzip File named BACnet_Configuration_Tool
- Open Folder named BACnet_Configuration_Tool
- Double Click on File BACnet_Configuration.exe



IMPORTANT: Right Click on the .exe File | Click on Send To | Click on Desktop (create shortcut)

After the installation, the program should open on the Login Screen:



Using the BACnet Configuration Tool:

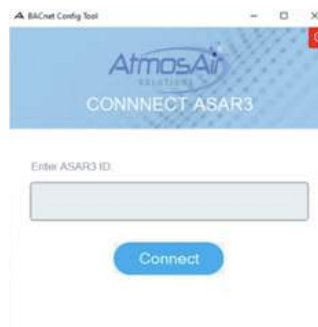
1. Connect the Ethernet cable from the Ethernet port on the Technician laptop to the ETH 2 port on the AtmosSmart 3 device.
2. Turn on the AtmosSmart 3 and wait one minute.
3. Connect the BACnet Ethernet cable from the AtmosSmart1, to AtmosSmart3 ETH2 port.
4. Once connected, go to the laptop and open the BACnet Configuration Software located on the Desktop.

Follow the steps below :

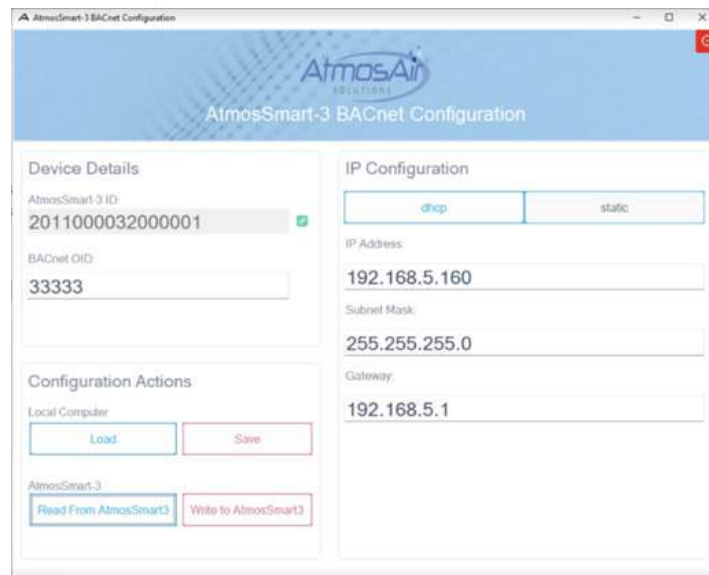
- Enter the User Login credentials and press Log In.



- Enter the AtmosSmart ID and press Connect. You will be directed to the Configuration Menu panel.



- In the Configuration Screen, you will find:



Device Details:

ID: AtmosSmart-3 Identifier (required field)

BACnet OID: BACnet IOD (required field)

Configuration Actions:

Save: By clicking this button, the user can Save the Configuration to a local computer on a JSON format.

To properly use this tool, read the AtmosSmart-3 Configuration first, then Save the Configuration.

Load: Load the Configuration from the File on the local computer. A window will open to select the File that contains the requested Configuration. After the Load, information should be filled in on the IP Configuration window on the right side.

Read from AtmosSmart-3: Read current Configuration from AtmosSmart-3. When reading from AtmosSmart-3, IP Configuration window will show reading from DHCP or Static.

This can help verify if the Configuration has been done correctly or what previous details the device contains.

Write to AtmosSmart-3: By writing to the AtmosSmart-3, the user will write the Configuration directly to the device. After this, the AtmosSmart-3 will reboot with a wait period of 60 seconds until the Write button becomes active again.

Client must confirm that they can see the AtmosSmart-3 on their BACnet network.

IMPORTANT: Write to AtmosSmart-3 has three statuses (Writing, Writing Successful, Rebooting Counter).

These messages will appear under the Write to AtmosSmart-3 button. Button is disabled until process has finished correctly.

IP Configuration:

DHCP Configuration: User can click on the DHCP tab on IP Configuration

IP Address

Subnet Mask

Gateway

Static Configuration: User can click on the Static tab on IP Configuration

IP Address

Subnet Mask

Gateway

To close the Application, please press the X button or the red Log Out icon at the top right corner.